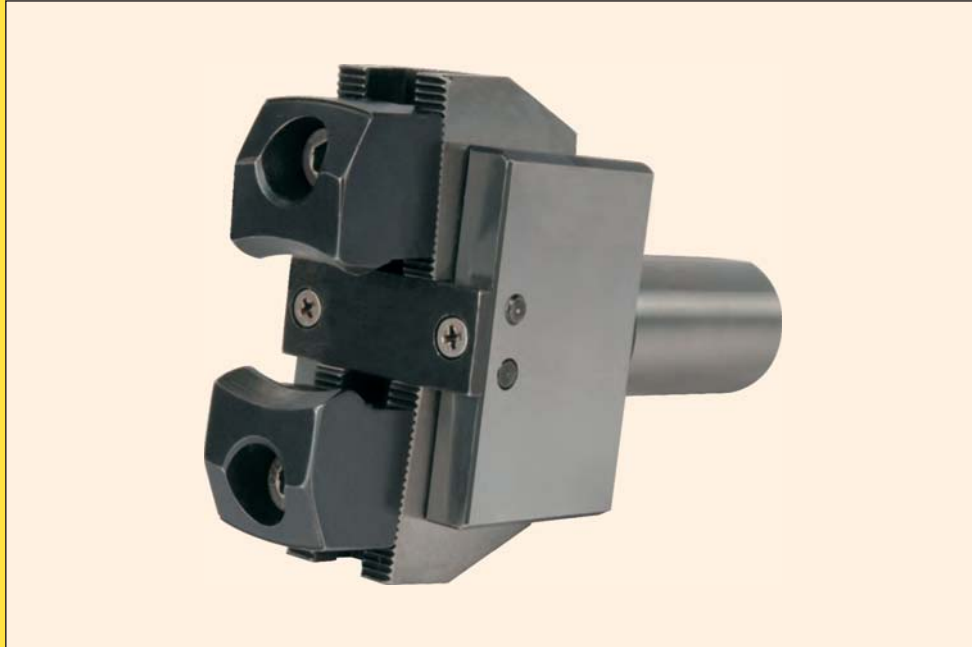




BAR PULLERS (FOR CNC LATHES)



FEATURES:

- 'KTA' BAR PULLER is unique with bar pulling capacity from 6.0 mm to 50.0 mm.
- This occupies only one station in the Turret.
- This is very good for small to medium sizes batch production.
- In many cases you can avoid bar feeders which occupies lot of space.
- This is available in standard cylindrical dia. 20, 25, 32, & 40 as per Din 1835 B+E (VDI & spl mounting on request).
- Please go through the schematic diagram which shows the simplicity of the holder function.
- Most suitable for CNC Lathes; CNC Turn - Mill Centers.