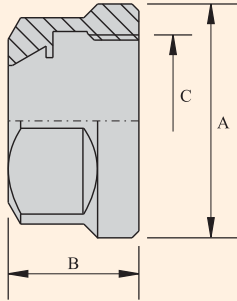


HEXAGONAL NUT FOR 'ER' COLLET CHUCK

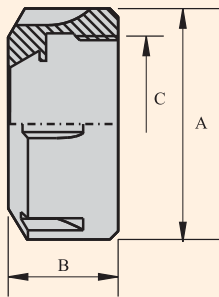
DIN 6499



TYPE	A	B	C	Spanner to be used
UM/ER 11	19.0	11.3	M 14 x 0.75	GS 17
UM/ER 16	28.0	17.50	M 22 x 1.50	GS 25
UM/ER 20	34.0	19.0	M 25 x 1.50	GS 30

SLOTTED NUT FOR 'ER' COLLET CHUCK

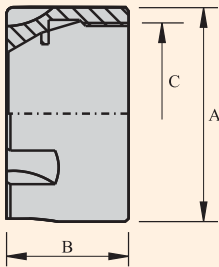
DIN 6499



TYPE	A	B	C	Spanner to be used
UM/ER 20	34.0	19.0	M 25 x 1.50	E 20
UM/ER 25	42.0	20.0	M 32 x 1.50	E 25
UM/ER 32	50.0	22.3	M 40 x 1.50	E 32
UM/ER 40	63.0	25.3	M 50 x 1.50	E 40
UM/ER 50	78.0	35.3	M 64 x 2.00	E 50

MINI NUT FOR 'ER' COLLET CHUCK

For minimum external diameter.



TYPE	A	B	C	Spanner to be used
UM/ER 8M	12.0	10.8	M 10 x 0.75	E 8M
UM/ER 11M	16.0	11.3	M 13 x 0.75	E 11M
UM/ER 16M	22.0	17.0	M 19 x 1.00	E 16M
UM/ER 20M	28.0	19.0	M 24 x 1.00	E 20M
UM/ER 25M	35.0	20.0	M 30 x 1.00	E 25M