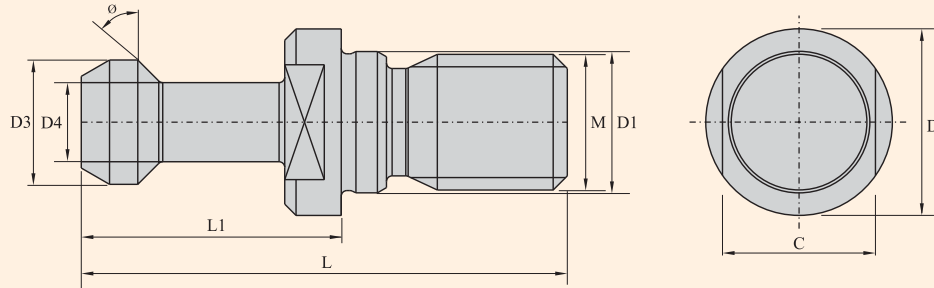
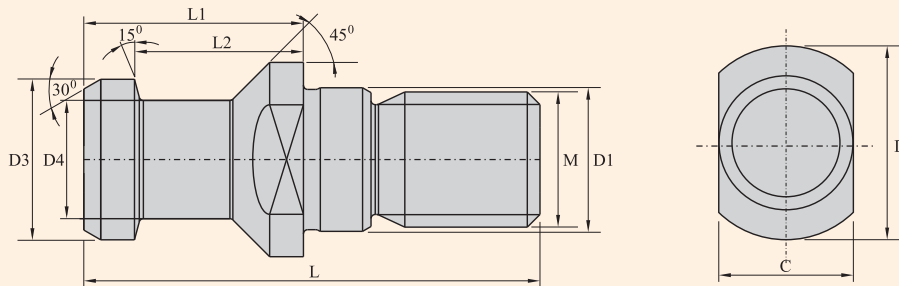


MAS-BT



ISO	Ø	M	L1	L	D	D1	D3	D4	C
30	30	M12	23	43	16	12,5	11	7	13
30	45	M12	23	43	16	12,5	11	7	13
40	30	M16	35	60	23	17	15	10	19
40	45	M16	35	60	23	17	15	10	19
40	90	M16	35	60	23	17	15	10	19
50	30	M24	45	85	38	25	23	17	30
50	45	M24	45	85	38	25	23	17	30
50	90	M24	45	85	38	25	23	17	30

DIN 69872



ISO	M	D	D1	D3	D4	L	L1	L2	C
30	M12	17	13	13	9	44	24	19	14
40	M16	23	17	19	14	54	26	20	19
50	M24	36	25	28	21	74	34	25	30