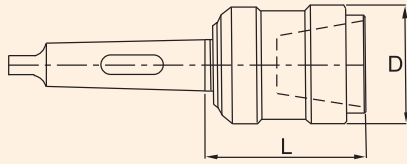


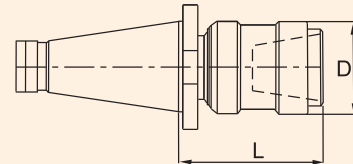
TYPE QCDTC SIZE : 2, 3 & 4

Chuck Type **QCDTC../MT..**



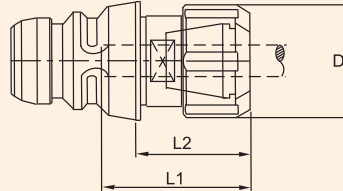
Ordering Example :Chuck QCDTC 3/MT3

Adaptor Type **QCDTC../ISO..**



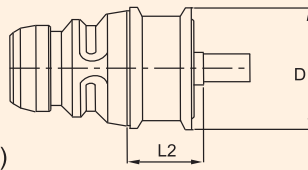
Ordering Example :Chuck QCDTC 3/ISO 50

Adaptor Type **QCCCA../E..** (Quick Change Collet Chuck Adaptor suitable for ER Type Collets.)



Ordering Example :Adaptor QCCCA 3/RD32

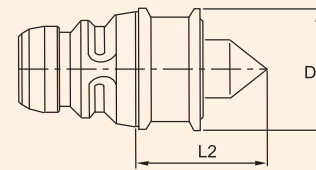
Adaptor Type **QCDC../B..**
(Quick Change Drill Chuck Adaptor suitable for keyless Drill Chucks.)



(For Keyless Drill Chucks)

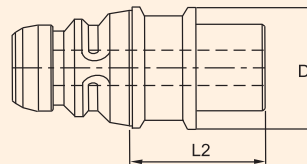
Ordering Example :Adaptor QCDC 3/B16

Adaptor Type **QCCD../60..°**
Dead Center (Quick Change Center Dead suitable for toolroom works.)



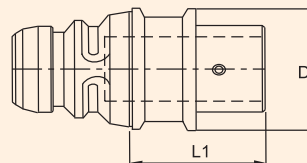
Ordering Example :Adaptor QCCD 3/60°

Adaptor Type **QCDA../MT..** (Quick Change Drill Adaptor suitable for Morse Taper Drills.)
With Internal Morse Taper DIN228



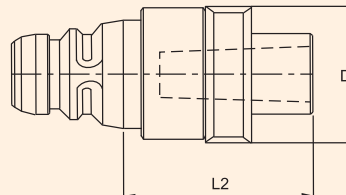
Ordering Example :Adaptor QCDA 3/MT3

Adaptor Type **QCADA../PB..** (Quick Change Adjustable Drill Adaptor suitable for Morse Taper Drills for pre-setting off the machine, Should be used with adjustable adaptors TR28X2 or TR16X2.)



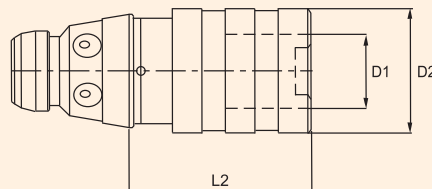
Ordering Example :Adaptor QCADA 3/PB28

Adaptor Type **QCFRH../MT..** (Quick Change Floating Reamer Holder suitable for Reamers, with self centering radial parallel float) with Radial Parallel Float with Internal Morse Taper DIN228



Ordering Example :Adaptor QCFRH 3/MT3

Adaptor Type **QCTAH../J..** (Quick Change Tap Adaptor Housing suitable for tapping with KWES Tap Adaptors.)



Ordering Example :Adaptor QCTAH 4/3

D2-Dia.19,31 & 48mm
Refer KWES/B Table

TYPE QCDTC SIZE : 0, 1, 2, 3 & 4

Chuck Size	Suitable Adaptor	D Dia.	Morse Taper				ISO Taper	
			MT 2 L	MT 3 L	MT 4 L	MT 5 L	ISO 40 L	ISO 50 L
QCDTC 2	SIZE 2	50	75	75	–	–	96	–
QCDTC 3	SIZE 3	60	–	88	89	–	109	99
QCDTC 4	SIZE 4	72	–	–	102	102	122	112

Adaptor Size	Chuck	D Dia.	Tool Insertion Length L1		RD16/E16 Collet 1-10mm. L2	RD32/E32 Collet 3-20mm. L2	RD40/E40 Collet 4-26mm. L2	Suitable Spanner
			min.	max.				
QCCCA 2/E16	QCDTC 2	42	30	50	42	–	–	Gs25
QCCCA 3/E..	QCDTC 3	50	40	60	42	51	–	E32
QCCCA 4/E..	QCDTC 4	60	40	60	–	63	63	E40

Adaptor Size	Suitable Chuck	D Dia.	Stub Taper DIN238 'L2'		Adaptor Size	Suitable Chuck	D Dia.	L2
			B12	B16				
QCDA 2	QCDTC 2	42	21.5	26	QCCD 2	QCDTC 2	42	46
QCDA 3	QCDTC 3	50	26	26	QCCD 3	QCDTC 3	50	65
QCDA 4	QCDTC 4	60	39	39	QCCD 4	QCDTC 4	60	78

Adaptor Size	Suitable Chuck	D Dia.	Tool Location (Morse Taper)			
			MT 1 L2	MT 2 L2	MT 3 L2	MT 4 L2
QCDA 2	QCDTC 2	42	18	30.5	–	–
QCDA 3	QCDTC 3	50	20.5	20.5	38.5	–
QCDA 4	QCDTC 4	60	33.5	33.5	33.5	56

Adaptor Size	Suitable Chuck	D Dia.	Adjustable Adaptor	Tool Location Morse Taper	L2
QCADA 2/16	QCDTC 2	42	16	MT 1	32
QCADA 3/28	QCDTC 3	50	28	MT 2	74
QCADA 4/36X28	QCDTC 4	60	36x28	MT 3	70

Adaptor Size	Suitable Chuck	D Dia.	Tool Location Morse Taper	Float in mm.	L2
QCFRH 3	QCDTC 3	60	MT 3	1.5	91
QCFRH 4	QCDTC 4	72	MT 4	1.5	115

Adaptor Designation Size	Suitable Adaptors		Suitable For Chuck	Length Compens. comp. Exp.		D2 Dia.	L2	Adaptor Designation Size	Suitable Adaptors		Suitable For Chuck	Length Compens. comp. Exp.		D2 Dia.	L2
	Size	Tread dia.		Size	Tread dia.				Size	Tread dia.					
QCTAH 2/1	KWES 1B	M3-M12	QCDTC 2	7.5	7.5	36	42	QCTAH 3/3	KWES 3B	M14-M33	QCDTC 3	20.0	20.0	78	126
QCTAH 2/2	KWES 2B	M8-M20	QCDTC 2	12.5	12.5	53	72	QCTAH 4/1	KWES 1B	M3-M12	QCDTC 4	7.5	7.5	36	42
QCTAH 3/1	KWES 1B	M3-M12	QCDTC 3	7.5	7.5	36	42	QCTAH 4/2	KWES 2B	M8-M20	QCDTC 4	12.5	12.5	53	66
QCTAH 3/2	KWES 2B	M8-M20	QCDTC 3	12.5	12.5	53	66	QCTAH 4/3	KWES 3B	M14-M33	QCDTC 4	20.0	20.0	78	121
								QCTAH 4/4	KWES 4B	M14-M33	QCDTC 4	22.5	22.5	96	135