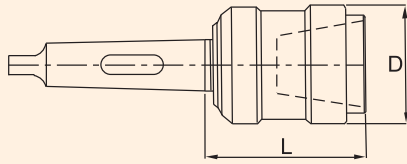


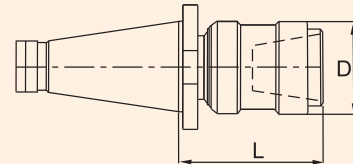
TYPE QCDTC SIZE : 2, 3 & 4

Chuck Type **QCDTC../MT..**



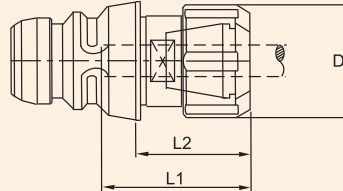
Ordering Example :Chuck QCDTC 3/MT3

Adaptor Type **QCDTC../ISO..**



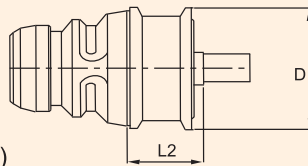
Ordering Example :Chuck QCDTC 3/ISO 50

Adaptor Type **QCCCA../E..** (Quick Change Collet Chuck Adaptor suitable for ER Type Collets.)



Ordering Example :Adaptor QCCCA 3/RD32

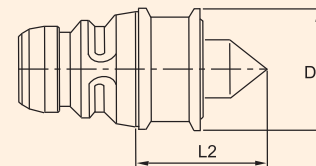
Adaptor Type **QCDC../B..**
(Quick Change Drill Chuck Adaptor suitable for keyless Drill Chucks.)



(For Keyless Drill Chucks)

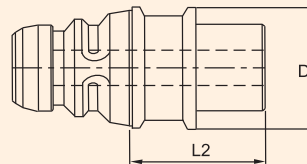
Ordering Example :Adaptor QCDC 3/B16

Adaptor Type **QCCD../60..°**
Dead Center (Quick Change Center Dead suitable for toolroom works.)



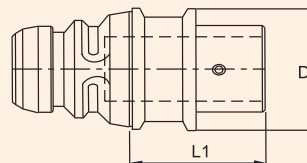
Ordering Example :Adaptor QCCD 3/60°

Adaptor Type **QCDA../MT..** (Quick Change Drill Adaptor suitable for Morse Taper Drills.)
With Internal Morse Taper DIN228



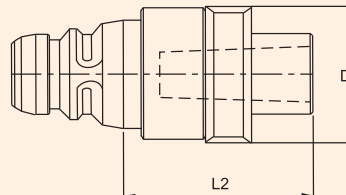
Ordering Example :Adaptor QCDA 3/MT3

Adaptor Type **QCADA../PB..** (Quick Change Adjustable Drill Adaptor suitable for Morse Taper Drills for pre-setting off the machine, Should be used with adjustable adaptors TR28X2 or TR16X2.)



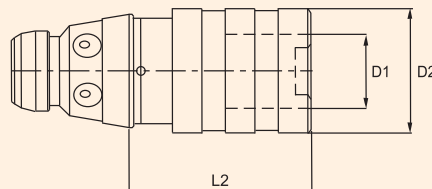
Ordering Example :Adaptor QCADA 3/PB28

Adaptor Type **QCFRH../MT..** (Quick Change Floating Reamer Holder suitable for Reamers, with self centering radial parallel float) with Radial Parallel Float with Internal Morse Taper DIN228



Ordering Example :Adaptor QCFRH 3/MT3

Adaptor Type **QCTAH../J..** (Quick Change Tap Adaptor Housing suitable for tapping with KWES Tap Adaptors.)



Ordering Example :Adaptor QCTAH 4/3

D2-Dia.19,31 & 48mm
Refer KWES/B Table

TYPE QCDTC SIZE : 0, 1, 2, 3 & 4

| Chuck Size | Suitable Adaptor | D Dia. | Morse Taper | | | | ISO Taper | |
|------------|------------------|--------|-------------|--------|--------|--------|-----------|----------|
| | | | MT 2 L | MT 3 L | MT 4 L | MT 5 L | ISO 40 L | ISO 50 L |
| QCDTC 2 | SIZE 2 | 50 | 75 | 75 | – | – | 96 | – |
| QCDTC 3 | SIZE 3 | 60 | – | 88 | 89 | – | 109 | 99 |
| QCDTC 4 | SIZE 4 | 72 | – | – | 102 | 102 | 122 | 112 |

| Adaptor Size | Chuck | D Dia. | Tool Insertion Length L1 | | RD16/E16 Collet 1-10mm. L2 | RD32/E32 Collet 3-20mm. L2 | RD40/E40 Collet 4-26mm. L2 | Suitable Spanner |
|--------------|---------|--------|--------------------------|------|----------------------------|----------------------------|----------------------------|------------------|
| | | | min. | max. | | | | |
| QCCCA 2/E16 | QCDTC 2 | 42 | 30 | 50 | 42 | – | – | Gs25 |
| QCCCA 3/E.. | QCDTC 3 | 50 | 40 | 60 | 42 | 51 | – | E32 |
| QCCCA 4/E.. | QCDTC 4 | 60 | 40 | 60 | – | 63 | 63 | E40 |

| Adaptor Size | Suitable Chuck | D Dia. | Stub Taper DIN238 'L2' | | Adaptor Size | Suitable Chuck | D Dia. | L2 |
|--------------|----------------|--------|------------------------|-----|--------------|----------------|--------|----|
| | | | B12 | B16 | | | | |
| QCDA 2 | QCDTC 2 | 42 | 21.5 | 26 | QCCD 2 | QCDTC 2 | 42 | 46 |
| QCDA 3 | QCDTC 3 | 50 | 26 | 26 | QCCD 3 | QCDTC 3 | 50 | 65 |
| QCDA 4 | QCDTC 4 | 60 | 39 | 39 | QCCD 4 | QCDTC 4 | 60 | 78 |

| Adaptor Size | Suitable Chuck | D Dia. | Tool Location (Morse Taper) | | | |
|--------------|----------------|--------|-----------------------------|---------|---------|---------|
| | | | MT 1 L2 | MT 2 L2 | MT 3 L2 | MT 4 L2 |
| QCDA 2 | QCDTC 2 | 42 | 18 | 30.5 | – | – |
| QCDA 3 | QCDTC 3 | 50 | 20.5 | 20.5 | 38.5 | – |
| QCDA 4 | QCDTC 4 | 60 | 33.5 | 33.5 | 33.5 | 56 |

| Adaptor Size | Suitable Chuck | D Dia. | Adjustable Adaptor | Tool Location Morse Taper | L2 |
|---------------|----------------|--------|--------------------|---------------------------|----|
| QCADA 2/16 | QCDTC 2 | 42 | 16 | MT 1 | 32 |
| QCADA 3/28 | QCDTC 3 | 50 | 28 | MT 2 | 74 |
| QCADA 4/36X28 | QCDTC 4 | 60 | 36x28 | MT 3 | 70 |

| Adaptor Size | Suitable Chuck | D Dia. | Tool Location Morse Taper | Float in mm. | L2 |
|--------------|----------------|--------|---------------------------|--------------|-----|
| QCFRH 3 | QCDTC 3 | 60 | MT 3 | 1.5 | 91 |
| QCFRH 4 | QCDTC 4 | 72 | MT 4 | 1.5 | 115 |

| Adaptor Designation Size | Suitable Adaptors | | Suitable For Chuck | Length Compens. comp. Exp. | | D2 Dia. | L2 | Adaptor Designation Size | Suitable Adaptors | | Suitable For Chuck | Length Compens. comp. Exp. | | D2 Dia. | L2 |
|--------------------------|-------------------|------------|--------------------|----------------------------|------------|---------|----|--------------------------|-------------------|------------|--------------------|----------------------------|------|---------|-----|
| | Size | Tread dia. | | Size | Tread dia. | | | | Size | Tread dia. | | | | | |
| QCTAH 2/1 | KWES 1B | M3-M12 | QCDTC 2 | 7.5 | 7.5 | 36 | 42 | QCTAH 3/3 | KWES 3B | M14-M33 | QCDTC 3 | 20.0 | 20.0 | 78 | 126 |
| QCTAH 2/2 | KWES 2B | M8-M20 | QCDTC 2 | 12.5 | 12.5 | 53 | 72 | QCTAH 4/1 | KWES 1B | M3-M12 | QCDTC 4 | 7.5 | 7.5 | 36 | 42 |
| QCTAH 3/1 | KWES 1B | M3-M12 | QCDTC 3 | 7.5 | 7.5 | 36 | 42 | QCTAH 4/2 | KWES 2B | M8-M20 | QCDTC 4 | 12.5 | 12.5 | 53 | 66 |
| QCTAH 3/2 | KWES 2B | M8-M20 | QCDTC 3 | 12.5 | 12.5 | 53 | 66 | QCTAH 4/3 | KWES 3B | M14-M33 | QCDTC 4 | 20.0 | 20.0 | 78 | 121 |
| | | | | | | | | QCTAH 4/4 | KWES 4B | M14-M33 | QCDTC 4 | 22.5 | 22.5 | 96 | 135 |